

oakheart

£200,000

Offers In Excess Of
Todd Way, Bury St. Edmunds

This well-presented two-bedroom coach house offers modern, low-maintenance living in a sought-after location.

The property benefits from its own private entrance on the ground floor with a hallway and stairs leading to the first-floor accommodation. Upstairs, you'll find a welcoming entrance hall, a bright and spacious

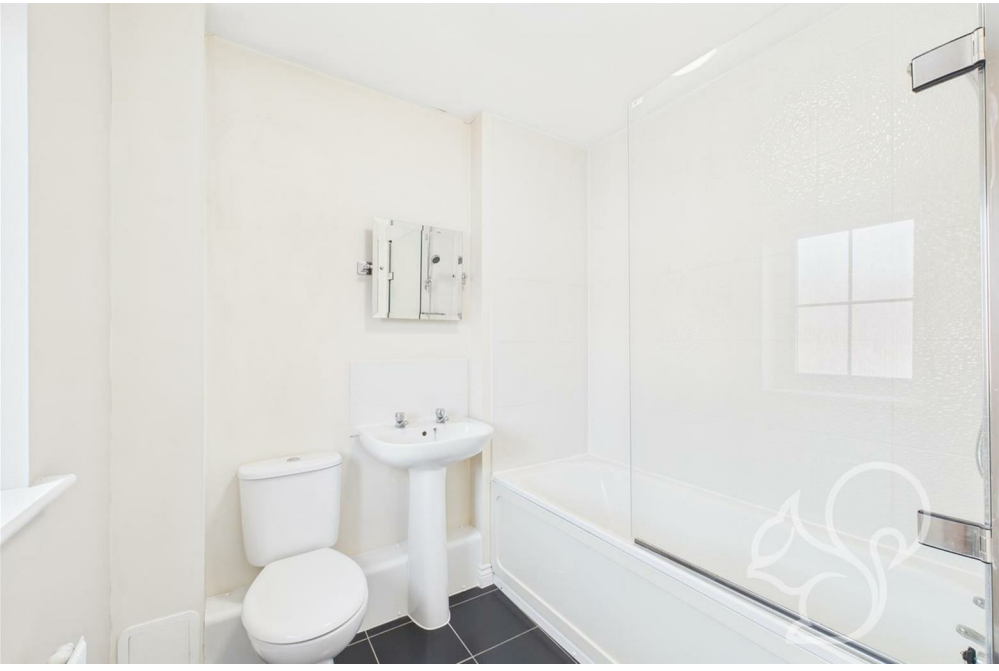
open-plan kitchen and sitting room, two comfortable bedrooms, and a stylish bathroom.

Outside, the property features a garage with an up-and-over door, along with an additional two parking space.

An excellent opportunity for first-time buyers or investors alike. Early viewing is highly recommended!







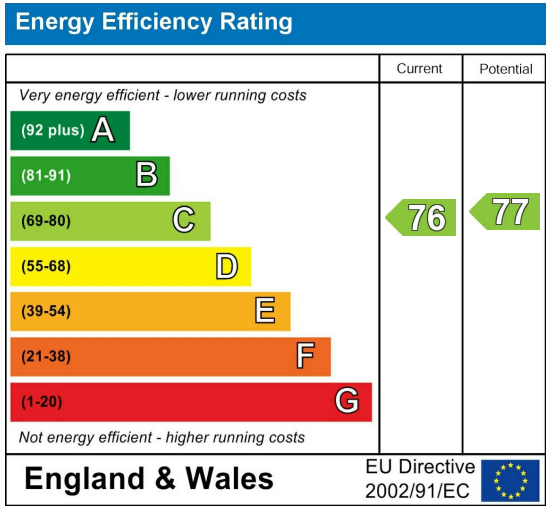




Local Authority:

Tenure:
Freehold

Council Tax Band:
B



Agents Note: Whilst every care has been taken to prepare these particulars, they are for guidance purposes only. All measurements are approximate and are for general guidance purposes only and whilst every care has been taken to ensure their accuracy, they should not be relied upon.